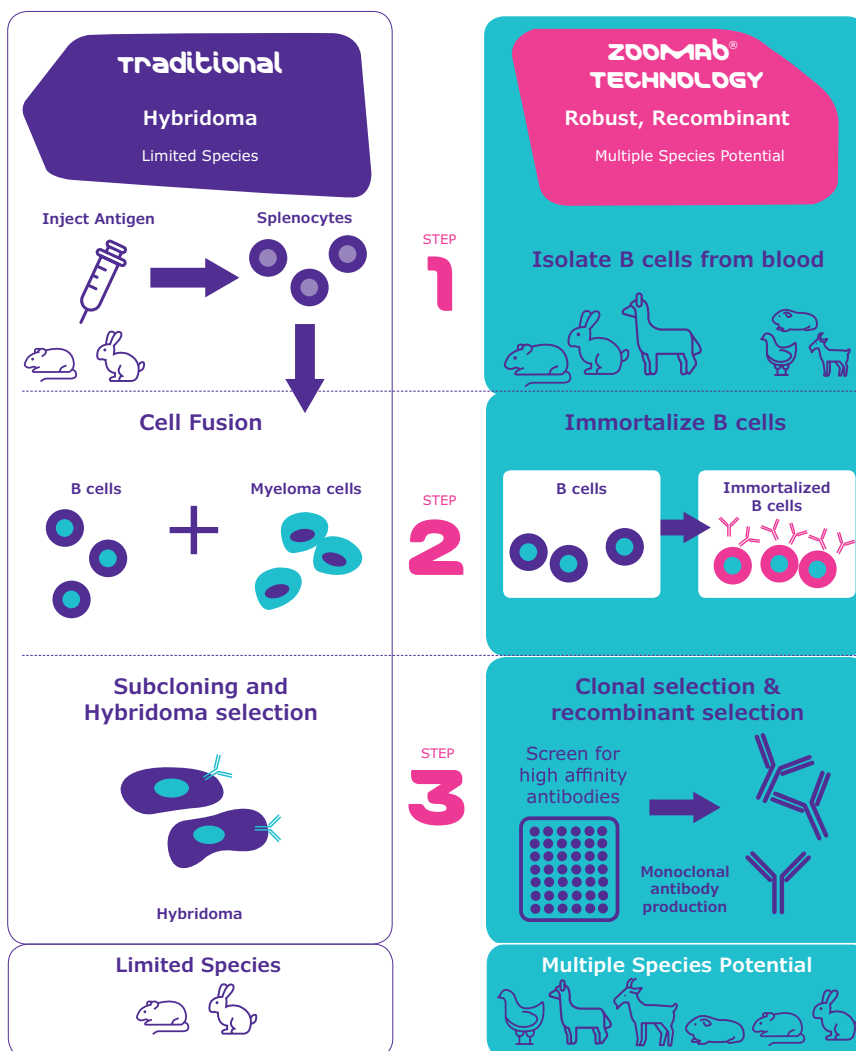


Experience the revolution

ZooMAb® Antibodies

Next generation of recombinant monoclonal antibodies

Developed from a proprietary recombinant expression system for greater specificity, higher consistency, and maximum stability, we are excited to offer our new ZooMAb® recombinant monoclonal antibodies for your research applications. Unlike previous conventional technologies using hybridomas, this expression platform uses tissue culture-based methods, which opens the door to a much wider “zoological” range of species to produce recombinant monoclonal antibodies.



Unique Features

Maximum Stability & Convenience

Provided as lyophilized product for long-term stability and storage. Allows for ambient shipping.

Multiple Package Sizes

Avoid freeze-thaws. Aliquoted at 25 µL lyophilized equivalents, e.g. 100 µL offered as 4x25 µL package

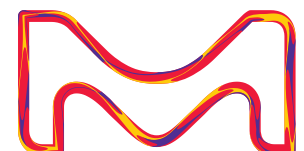
2D Quick Response Code

Scannable bar code on each vial via tablet or smartphone to access ZooMAb® info online

Preservative-free

Free of biocides and preservatives to allow use in both *in vivo* and *in vitro* applications.

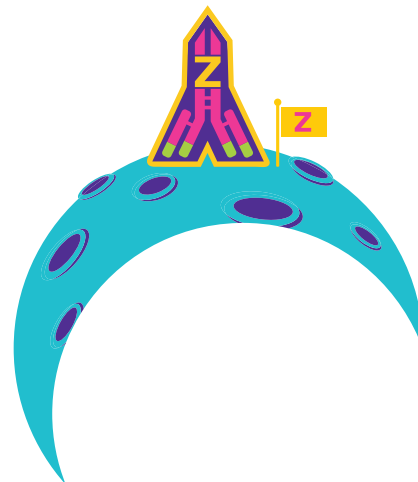
For more information, visit SigmaAldrich.com/ZooMAb



ZooMab[®] Recombinant Antibodies

Recombinant antibodies engineered for greater specificity, higher consistency, and maximum stability

Our ZooMAB[®] recombinant antibodies platform represents an entirely new generation of recombinant monoclonal antibodies that offer the superior specificity and affinity of a monoclonal and polyclonal combined with the flexibility of a recombinant for a wider selection of targets, formats, and species.



	Rabbit Polyclonal	Mouse Monoclonal	ZooMAB [®] Recombinant Monoclonal
Reproducibility	•	••	•••
Specificity	•	••	•••
Precision	•	••	•••
Storage/Stability	•	•	•••
Affinity for IHC	•	•	•••
Host Sacrifice	Required	Required	Not required
Stable DNA Clone	No	No	Yes
Format	Liquid	Liquid	Lyophilized powder
Preservatives/ Additives	Yes	Yes	No
Pack Size	Single	Single	Multiple
Shipping	Ice	Ice	Ambient/room temperature

Explore with ZooMAB[®] Recombinant Antibodies.

SigmaAldrich.com/ZooMAB

Explore the latest ZooMab[®] Monoclonal Antibodies available NOW!

Apoptosis & Cancer

Cat.No.	Description	Species	Key Applications
ZRB1235	Anti-ATG7 Antibody, clone 1E15	Rabbit	Affinity Binding Assay;IHC;WB
ZRB1813	Anti-G0S2 Antibody, clone 2C13	Rabbit	WB;IHC;Affinity Binding Assay
ZRB1202	Anti-Mitofusin-2 Antibody, clone 2D19	Rabbit	WB;Affinity Binding Assay;ICC
ZRB1046	Anti-MOSPD2 Antibody, clone 3C20	Rabbit	WB;Affinity Binding Assay;ICC;IHC
ZRB1123	Anti-Tubulin γ -2 Antibody, clone 1M19	Rabbit	WB;Affinity Binding Assay;IHC
ZRB1159	Anti-AFP Antibody, clone 3B7	Rabbit	WB;Affinity Binding Assay;ICC;IHC;FC
ZRB1025	Anti-PD-1 Antibody, clone 1F7	Rabbit	FC;Affinity Binding Assay;ICC;IHC

Epigenetics & Nuclear Function

Cat.No.	Description	Species	Key Applications
ZMS1066	Anti-LINE-1 ORF1p Antibody, clone 4H1	Mouse	WB;ICC;FC
ZMS1054	Anti-Centrin Antibody, clone 20H5	Mouse	WB; IF;IHC
ZMS1071	Anti-pan Ago Antibody, clone 2A8	Mouse	WB;ICC;IP;FC;IHC
ZMS1044	Anti-53BP1 Antibody, clone BP13	Mouse	WB;IHC;ICC;FC
ZRB1054	Anti-Lamin A/C Antibody, clone 2B10	Rabbit	ICC;IHC;WB
ZRB1061	Anti-MLL/HRX CT Antibody, clone 5C15	Rabbit	Affinity Binding Assay;ICC;IHC
ZRB1084	Anti-CBX2 Antibody, clone 3I14	Rabbit	Affinity Binding Assay;ICC;IHC;WB
ZRB1250	Anti-NFkB2 (p100/p52) Antibody, clone 5F3	Rabbit	Affinity Binding Assay;ICC;IHC;WB
ZRB1194	Anti-KLF5 Antibody, clone 1J12	Rabbit	Affinity Binding Assay;ICC;IHC;WB
ZRB1205	Anti-Ago2 Antibody, clone 2H10	Rabbit	WB;ICC;FC;IHC
ZRB1199	Anti-Zfp64 Antibody, clone 3B22	Rabbit	WB;ICC;Affinity Binding Assay
ZRB1183	Anti-RFX7 Antibody, clone 1J22	Rabbit	WB;Affinity Binding Assay;ICC
ZRB1208	Anti-HDAC2 Antibody, clone 1E22	Rabbit	WB;ICC;IHC
ZRB1185	Anti-METTL7A Antibody, clone 1O8	Rabbit	WB;ICC;IHC;Affinity Binding Assay
ZRB1241	Anti-Smad1 Antibody, clone 1B9	Rabbit	WB;Affinity Binding Assay;ICC;IHC
ZRB1830	Anti-NOTCH2 Antibody, clone 1B14-5	Rabbit	WB;Affinity Binding Assay;ICC;IHC

Epigenetics & Nuclear Function

Cat.No.	Description	Species	Key Applications
ZRB1198	Anti-TSTA3 Antibody, clone 2N10-H1	Rabbit	WB;Affinity Binding Assay;ICC;IHC
ZRB1053	Anti-ALKBH5 Antibody, clone 6G7	Rabbit	WB;ICC;Affinity Binding Assay;ELISA
ZRB1342	Anti-SATB2 Antibody, clone 1H17	Rabbit	WB;Affinity Binding Assay;ICC;IHC

Inflammation & Immunology

Cat.No.	Description	Species	Key Applications
ZRB1161	Anti-ANKZF1 Antibody, clone 1D4	Rabbit	Affinity Binding Assay;ICC;IHC;WB
ZRB1759	Anti-CD4 Antibody, clone 2G19	Rabbit	Affinity Binding Assay;FC;ICC;IHC;WB
ZRB1113	Anti-LILRB4 Antibody, clone 1H12	Rabbit	WB;ICC;FC;Affinity Binding Assay
ZRB1182	Anti-MR-proADM Antibody, clone 2B19	Rabbit	WB;Affinity Binding Assay;IHC
ZRB1762	Anti-NLRP3 Antibody, clone 4B4	Rabbit	WB;IHC;ICC;Affinity Binding Assay
ZRB1275	Anti-CD81 Antibody, clone 1C23	Rabbit	WB;FC;Affinity Binding Assay;IHC
ZRB1864	Anti-CD63 Antibody, clone 3H6	Rabbit	WB;IHC;Affinity Binding Assay
ZMS1021	Anti-Influenza A Nucleoprotein Antibody, clone A3	Mouse	WB;ICC;ELISA
ZRB1277	Anti-F4/80 Antibody, clone 2F10	Rabbit	Affinity Binding Assay;ICC;IHC;WB;FC
ZRB1259	Anti-FcεRI γ-subunit Antibody, clone 1B6	Rabbit	Affinity Binding Assay;FC;ICC;IHC;WB

Neuroscience

Cat.No.	Description	Species	Key Applications
ZMS1051	Anti-Dystrophin Antibody, clone 2C6 (MANDYS106)	Mouse	WB;IHC;IF
ZMS1053	Anti-Integrin αV Antibody, clone 272-17E6	Mouse	ICC;FC;IHC
ZMS1064	Anti-Dynein Antibody, clone 74.1	Mouse	WB;FC;ICC
ZMS1045	Anti-Amyloid β42/40 Antibody, clone W0-2	Mouse	Dot Blot;IF;IHC
ZMS1039	Anti-α-Tubulin Antibody, clone DM1A	Mouse	WB;IHC;ICC
ZMS1043	Anti-Bestrophin-1 Antibody, clone E6-6	Mouse	WB;IHC;IF
ZRB1157	Anti-Rhodopsin Antibody, clone 5D17	Rabbit	Affinity Binding Assay;ICC;IHC;WB
ZRB1158	Anti-VGAT Antibody, clone 2E6	Rabbit	Affinity Binding Assay;ICC;IHC;WB
ZRB1720	Anti-SV2A Antibody, clone 1I4	Rabbit	Affinity Binding Assay;ICC;IHC;WB
ZRB1110	Anti-QPRTase Antibody, clone 1G22	Rabbit	Affinity Binding Assay;FC;ICC;IHC;WB
ZRB1249	Anti-NOS1 Antibody, clone 1F14	Rabbit	ICC;IHC;WB
ZRB1090	Anti-GAD67 Antibody, clone 4B5	Rabbit	Affinity Binding Assay;IF;IHC;WB
ZRB1761	Anti-ZO-1 Antibody, clone 4E14	Rabbit	ICC;IHC;WB
ZRB1078	Anti-MRGRPX4 Antibody, clone 3F4	Rabbit	ICC;IHC;WB
ZRB1246	Anti-Mn-SOD Antibody, clone 1C14	Rabbit	Affinity Binding Assay;ICC;IHC;WB
ZRB1079	Anti-CNTNAP2 Antibody, clone 2D17	Rabbit	WB;IHC;Affinity Binding Assay
ZRB1779	Anti-BSN Antibody, clone 2I2	Rabbit	WB;Affinity Binding Assay;ICC;IHC
ZRB1267	Anti-CGRP-1 Antibody, clone 2E18	Rabbit	WB;ICC;Affinity Binding Assay;IHC
ZRB1252	Anti-eNOS Antibody, clone 2F12	Rabbit	WB;IHC;Affinity Binding Assay;ICC
ZRB1271	Anti-Laminin B2 Antibody, clone 1B9	Rabbit	WB;Affinity Binding Assay;FC;IHC
ZRB1124	Anti-β-Tubulin Antibody, clone 1C9	Rabbit	WB;ICC;IHC;Affinity Binding Assay
ZRB1268	Anti-Prion Protein Antibody, clone 3D17	Rabbit	WB;Affinity Binding Assay;ICC;IHC
ZRB1863	Anti-Doublecortin Antibody, clone 3F11	Rabbit	WB;ICC;IHC;IF
ZRB1283	Anti-ASTN2 Antibody, clone 2E8	Rabbit	WB;Affinity Binding Assay;FC;ICC

Signaling

Cat.No.	Description	Species	Key Applications
ZRB1206	Anti-CaM Kinase IIα Antibody, clone 1C20	Rabbit	Affinity Binding Assay;IF;IHC;WB
ZRB1760	Anti-MMP-14 Antibody, clone 1J5	Rabbit	Affinity Binding Assay;FC;ICC;IHC;WB
ZRB1780	Anti-mTOR Antibody, clone 4O5	Rabbit	WB;ICC;IHC
ZRB1266	Anti-Na ⁺ -K ⁺ ATPase α Antibody, 1 Antibody, clone 1E13	Rabbit	WB;ICC;IHC
ZRB1237	Anti-HSP70 Antibody, clone 4E12	Rabbit	WB;Affinity Binding Assay;IHC;ICC
ZRB1243	Anti-FGFR1 Antibody, clone 2J21	Rabbit	WB;Affinity Binding Assay;ICC
ZRB1240	Anti-GLUT-4 Antibody, clone 1M13	Rabbit	WB;IHC;FC;ICC

Signaling

Cat.No.	Description	Species	Key Applications
ZRB1162	Anti-PTRH1 Antibody, clone 3O6	Rabbit	WB;ICC;Affinity Binding Assay;IHC
ZRB1166	Anti-γ-Actin Antibody, clone 6J13	Rabbit	WB;FC;IHC;ICC
ZRB1111	Anti-eIF3h Antibody, clone 2B15	Rabbit	WB;IHC;Affinity Binding Assay;ICC
ZRB1828	Anti-ACAD10 Antibody, clone 3J20	Rabbit	WB;IHC;FC;Affinity Binding Assay
ZRB1253	Anti-Ezrin Antibody, clone 1D15	Rabbit	Affinity Binding Assay;FC;ICC;IHC;WB
ZRB1856	Anti-14-3-3 β/α Antibody, clone 1D15	Rabbit	WB;Affinity Binding Assay;ELISA
ZRB1088	Anti-Arginase-1 Antibody, clone 3B17	Rabbit	WB;FC;Affinity Binding Assay;IHC

Stem Cell Research

Cat.No.	Description	Species	Key Applications
ZRB1272	Anti-TFE3 Antibody, clone 1G5	Rabbit	WB;IHC;ICC;Affinity Binding Assay

Join The Journey!

Sign up to receive our
Antibody Voyager eNewsletter today.

Features include:

- Application specific tips and tricks
- Recent research developments
- Updates on Cancer and Neuroscience products
- Technology spotlights

SigmaAldrich.com/voyager



Contact your local Account Manager
today for a quotation

Account Manager:

Email:

Phone:

To place an order or receive technical assistance in the U.S. and Canada, call toll-free 1-800-521-8956
For other countries across Europe and the world, please visit: SigmaAldrich.com/offices
For Technical Service, please visit: SigmaAldrich.com/techservice

Merck KGaA
Frankfurter Strasse 250
64293 Darmstadt, Germany

SigmaAldrich.com

© 2021 Merck KGaA, Darmstadt, Germany and/or its affiliates. All Rights Reserved. Merck, the vibrant M and Sigma-Aldrich are trademarks of Merck KGaA, Darmstadt, Germany or its affiliates. All other trademarks are the property of their respective owners. Detailed information on trademarks is available via publicly accessible resources.

MK_FL7921EN 36131 05/2021

